

St. PBN PUBLIC SCHOOL
UNIT TEST-I
CLASS – VII
ENGLISH
SAMPLE PAPER

Time – 2 hours

. M.M –60

INSTRUCTIONS:

- * All questions are mandatory.**
- * Read the questions carefully before attempting.**

SECTION- A (READING)

1. Read the passage given below and answer carefully: (1X5=5)

The Story of Marie Curie

Marie Curie was a famous scientist. She was born in Poland in 1867. Her original name was Maria Skłodowska. Marie moved to Paris to study physics and mathematics at the Sorbonne University. She was very dedicated to her studies.

In Paris, she met Pierre Curie, who was also a scientist. They got married and started working together on radioactivity. Radioactivity is a process where atoms release energy. Marie and Pierre's research was groundbreaking.

Together, they discovered two new elements: polonium and radium. These elements are highly radioactive. Their discovery changed science and medicine. Marie Curie became the first woman to win a Nobel Prize. She won the Nobel Prize in Physics in 1903, sharing it with her husband and another scientist, Henri Becquerel. Later, she won another Nobel Prize in Chemistry in 1911, making her the first person to win Nobel Prizes in two different sciences.

Marie Curie's work was not easy. She faced many challenges, but she never gave up on her dreams. She died in 1934 from a disease caused by her long exposure to radioactivity. However, her contributions to science continue to inspire people around the world.

Questions:

- * Where was Marie Curie born?**
- * What did Marie and Pierre Curie discover?**

- * What is radioactivity?
- * How many Nobel Prizes did Marie Curie win, and in what fields?
- * Assertion & Reasoning Question
 - * Assertion (A): Marie Curie was the first woman to win a Nobel Prize.
 - * Reason (R): She discovered two new elements.
 - * Options: (Same as original paper)
 - * A) Both A and R are true, and R is the correct explanation of A.
 - * B) Both A and R are true, but R is not the correct explanation of A.
 - * C) A is true, but R is false.
 - * D) A is false, but R is true

2. Read the given poem and answer the following questions: (1X5 = 5)

The Road Not Taken by Robert Frost

Two roads diverged in a yellow wood,
 And sorry I could not travel both
 And be one traveler, long I stood
 And looked down one as far as I could
 To where it bent in the undergrowth;
 Then took the other, as just as fair,
 And having perhaps the better claim,
 Because it was grassy and wanted wear;
 Though as for that the passing there
 Had worn them really about the same,
 And both that morning equally lay
 In leaves no step had trodden black.

Oh, I kept the first for another day!
Yet knowing how way leads on to way,
I doubted if I should ever come back.
I shall be telling this with a sigh
Somewhere ages and ages hence:
Two roads diverged in a wood, and I—
I took the one less traveled by,
And that has made all the difference.

Questions:

- * What is the setting of the poem?
- * Why did the speaker feel sorry?
- * Which road did the speaker choose, and why?
- * What does the road in the poem symbolize?
- * Assertion and Reason:
 - * Assertion (A): The speaker in the poem took the road less traveled.
 - * Reason (R): The speaker knew he could always come back to the other road.
- * Options: (Same as original paper)
 - * a) Both A and R are true, and R explains A.
 - * b) Both A and R are true, but R does not explain A.
 - * c) A is true, but R is false.
 - * d) A is false, but R is true.

SECTION- B (GRAMMAR)

3. Answer the following questions related to Sentence Structure: (1X4 = 4)

- a) Identify the type of sentence (Simple, Compound, or Complex): Although the sun was shining, it was cold.
- b) Rearrange the words to form a meaningful sentence: the / cat / quickly / tree / climbed / the
- c) Identify the subject and predicate in the sentence: The tall building swayed in the wind.
- d) Combine the following simple sentences using a suitable conjunction: The movie was interesting. We enjoyed it.

4. Answer the following questions related to Clauses: (1X4 = 4)

- a) Identify the noun clause in the sentence: I wonder if they will come.
- b) Complete the sentence using an adjective clause: The book, _____, is very interesting.
- c) Rewrite the sentence by replacing the underlined part with an adverbial clause: He left *after the sun set*.
- d) Combine the following sentences into one complex sentence using a relative clause: The man is wearing a hat. The man is my uncle.

5. Answer the following questions related to Determiners: (0.5 X 8 = 4)

- a) Fill in the blank with the correct determiner: I need ____ help with my homework. (some / any)
- b) Choose the correct article: He is ____ honest man. (a / an)
- c) Identify the determiner: My car is parked outside.
- d) Choose the correct quantifier: There is ____ milk in the bottle. (a little / a few)
- e) Rewrite the sentence using a different quantifier: She has many friends.
- f) Identify the quantifier: Each child received a gift.
- g) Fill in the blank with a possessive determiner: This is ____ book. (my/mine)
- h) Identify the demonstrative determiner: These flowers are beautiful.

6. Answer the following questions related to Pronouns: (1 X 4 = 4)

- a) Identify the pronoun and its type: She herself baked the cake.
- b) Choose the correct pronoun: The teacher asked ____ to complete the assignment. (us/we)
- c) Replace the underlined noun with a suitable pronoun: The children played with *the toys*.
- d) Fill in the blank with a suitable relative pronoun: This is the house ____ I grew up in.

SECTION-C (WRITING)

7. Write a short biography of Dr. APJ Abdul Kalam in 100-120 words. Include details about his early life, education, contributions, and achievements taking help from given pointers.

(7)

* His full name: Avul Pakir Jainulabdeen Abdul Kalam, and his birthplace: Rameswaram, Tamil Nadu.

* His title: "Missile Man of India" (for his significant contribution to India's missile development programs).

* His association with key organizations: DRDO (Defence Research and Development Organisation) and ISRO (Indian Space Research Organisation).

* His role as the 11th President of India (2002-2007).

* The description "People's President," reflecting his widespread popularity.

* His influence as an inspiration for young people through his focus on education and innovation.

* Key achievements:

- * Played a crucial role in India's missile development.

- * Awards like Bharat Ratna, Padma Bhushan, and Padma Vibhushan.

8. You are the Head Boy/Head Girl of your school. Write a notice informing students about an inter-school debate competition to be held next week. Include details like date, time, venue, and registration process. (6)

9. Write a letter to the editor of a newspaper expressing your views on the importance of reading books and its impact on young minds. (7)

SECTION-D LITERATURE

(Same as before)

10. Read the lines and answer the following questions- (1x3=3)

When skies were dark and winds ran wild,
And rivers danced with joy, beguiled,
Some moment when the earth stood still,
I bore the weight of fate's own will.

- a) Name the poem and the poet.
- b) What does the poet mean by "the devil's walking parody" in the poem?
- c) How does the donkey describe its physical appearance in the poem?

11. Answer the following questions in brief- (2X5=10)

- a) Who became equals in the story The Story of Equals, and how did it happen?
- b) Why did Drona go to Parasurama, and why was Parasurama unable to give anything to Drona?
- c) Why was the king displeased with the bird?
- d) What do you think the gilded cage is a metaphor for?
- e) When was the donkey born? Describe the moment in your own words.

12. Answer the given question in detail:- (3)

- a) What is the central theme of the chapter 'The Caged Parrot'.

सेंट०पी०बी०एन०पब्लिक स्कूल
इकाई परीक्षा - I
कक्षा : सातवीं
हिंदी(आदर्श प्रश्न पत्र)

समय : 2 घंटे

अंक : 60

सामान्य निर्देश :

- 1 सभी प्रश्नों के उत्तर देना अनिवार्य है।
- 2 लेख और वर्तनी का ध्यान रखें।
- 3 प्रश्नों को ध्यान से पढ़कर उत्तर दीजिए।

भाग क

प्रश्न 1. निर्देशानुसार उत्तर दीजिए।

(1x20=20)

- (i) हिन्दी के वर्तमान स्वीकृत रूप का नाम _____ है।
- (ii) भाषा की सबसे छोटी इकाई _____ कहलाती है।
- (iii) द्वित्व व्यंजन से दो शब्द बनाइए।
- (iv) हसना और सन्यासी को शुद्ध रूप में लिखिए।
- (v) रूद्र शब्द का सही वर्ण विच्छेद कीजिए।
- (vi) द्रव्यवाचक संज्ञा के दो उदाहरण लिखिए।
- (vii) वचन संबंधी अशुद्धि सुधारकर लिखिए—आपका दर्शन पाकर मैं धन्य हो गया।
- (viii) पंडित जी को गुलाब बहुत पसंद था। _____ संज्ञा का कौन सा भेद है।
- (ix) निजवाचक सर्वनाम का प्रयोग करते हुए वाक्य बनाइए।
- (x) यह कमरा आयताकार है। रेखांकित पद का विशेषण भेद लिखिए।
- (xi) जो करेगा वो भरेगा _____ सर्वनाम का कौन सा भेद है?
- (xii) रुचि चारू से ज्यादा लंबी है। विशेषण की अवस्था बताइए।
- (xiii) मेघ शब्द के दो पर्यायवाची शब्द लिखिए।
- (xiv) उपस्थित व नवीन शब्दों के विलोम शब्द लिखिए।
- (xv) जो नृत्य करती है – वाक्यांश के लिए एक शब्द लिखिए।
- (xvi) शोक_शौक शब्दों के भिन्नार्थक शब्द लिखिए।
- (xvii) 'ओखली में सिर देना' मुहावरे का अर्थ लिखकर वाक्य में प्रयोग कीजिए।
- (xviii) 'अधजल गगरी छलकत जाय' लोकोक्ति का अर्थ लिखकर वाक्य में प्रयोग कीजिए।
- (xix) कर्म के आधार पर क्रिया के कितने भेद होते हैं?
- (xx) निम्नलिखित कथन और कारण को ध्यानपूर्वक पढ़िए। तत्पश्चात् नीचे दिए विकल्पों में से उचित विकल्प चुनकर उत्तर लिखिए।
कथन A – जब कोई करता स्वयं कार्य न करके दूसरों से काम करवाता है, उसे प्रेरणार्थक क्रिया कहते हैं।
कारण R – प्रेरणार्थक क्रिया के दो रूप होते हैं।

- (i) कथन A सही है, कारण R गलत है
- (ii) कथन A गलत है, कारण R सही है
- (iii) कथन A और कारण R दोनों गलत है
- (iv) कथन A और कारण R दोनों सही है

प्रश्न 2. निम्नलिखित गद्यांश को पढ़कर पूछे गए प्रश्नों के उत्तर सही विकल्प चुनकर दीजिए।

(5)

चलना मनुष्य का स्वभाव है। पानी भी चलता है, हवा भी चलती है और मनुष्य भी चलता है। प्राचीन समय में एक स्थान से दूसरे स्थान पर पहुँचने के लिए मनुष्य मीलों पैदल यात्रा करता था। कई बार यात्रा इतनी लंबी हो जाती थी कि वर्षों लग जाते थे। फिर पालकियों का प्रयोग किया जाने लगा। इन्हें चार लोग उठाते थे। पालकियों का प्रयोग स्त्रियों के लिए किया जाता था। पहिए के आविष्कार ने मनुष्य का जीवन ही बदल दिया। इसके आविष्कार से सर्वप्रथम बैलगाड़ी द्वारा यात्रा सुगम व सस्ती होने लगी। धीरे-धीरे इसी पहिए से मशीन से चलने वाली गाड़ियाँ सड़कों पर दौड़ने लगी।

(1) गद्यांश के लिए उचित शीर्षक दीजिए।

(क) पहिए की खोज

(ग) पालकी की खोज

(ख) बैलगाड़ी की खोज

(2) निम्नलिखित कथन और कारण को ध्यानपूर्वक पढ़िए। तत्पश्चात् नीचे दिए विकल्पों में से उचित विकल्प चुनकर उत्तर लिखिए।

कथन(A): प्राचीन समय में एक स्थान से दूसरे स्थान पर पहुँचने के लिए मनुष्य मीलों पैदल यात्रा करता था।

कारण (R): उसे चलने का शौक था।

(क) कथन A सही है, कारण R गलत है

(ख) कथन A गलत है, कारण R सही है

(ग) कथन A और कारण R दोनों गलत है

(घ) कथन A और कारण R दोनों सही है।

(3) जीवन शब्द में कौन-सा उपसर्ग प्रयोग हुआ है ?

(क) जीव

(ग) न

(ख) जी

(4) पहिए के आविष्कार से क्या लाभ हुआ?

(क) यात्रा सुगम हो गई

(ग) दोनों सही हैं

(ख) यात्रा कठिन हो गई

(5) आविष्कार शब्द का अर्थ क्या है?

(क) खोज

(ग) तोड़ना

(ख) सत्यानाश करना

भाग ख

प्रश्न 3 निम्नलिखित प्रश्नों का उत्तर एक शब्द या एक वाक्य में दीजिए।

(1 x 4=4)

(i) 'प्रभात की नई किरण' कविता के कवि का नाम लिखिए।

(ii) 2004 तक 'कबूतर डाक सेवा' किस राज्य में काम करती थी ?

- (iii) लड़का और लड़की की वेशभूषा में क्या अंतर था?
- (iv) मानव सभ्यता को किस युग से किस युग की ओर ले आया है?

प्रश्न 4 निम्नलिखित प्रश्नों के उत्तर 30 से 40 शब्दों में दीजिए ।

(3 x 4 = 12)

- (i) आशय स्पष्ट कीजिए- 'अभी तो समझना है , धरती का कंपन | अभी इन घटाओं की रफ़्तार को जकड़ना है'
- (ii) " लड़की हूँ ना" सावित्री के इस कथन में छिपे दर्द को अपने शब्दों में लिखिए।
- (iii) ' बुद्धिमान पक्षी ' पाठ के माध्यम से लेखक हमें क्या संदेश देना चाहते हैं?
- (iv) ' गंगा यमुना हिंद महासागर के हम रखवाले हैं ' पंक्ति का भाव स्पष्ट कीजिए।

प्रश्न 5 निम्नलिखित प्रश्नों में से किसी एक का उत्तर 40 से 50 शब्दों में दीजिए। (4x1= 4)

- (i) लड़कियों को अपने अधिकारों के लिए आवाज़ उठानी चाहिए , क्या आप इस कथन से सहमत हैं, यदि हाँ तो क्यों?
- (ii) क्या आप 'प्रभात की नई किरण' कविता को कोई और शीर्षक देना चाहेंगे? यदि हाँ तो क्या शीर्षक देना चाहेंगे? कारण सहित लिखिए।

प्रश्न 6 निम्नलिखित काव्यांश को पढ़कर पूछे गए प्रश्नों के उत्तर सही विकल्प चुनकर दीजिए।

(5)

कल्पना की सुन्दर उड़ान हूँ मैं
 भावनाओं का प्रचंड तूफान हूँ मैं
 प्राणियों में सबसे महान हूँ मैं
 पर ताकत से अपनी अनजान हूँ मैं
 मैंने हिमालय का गुरुर भी तोड़ा है
 मैंने ही धरती को चंद्रमा से जोड़ा है
 मैंने ही तोड़ा है महासागरों का गौरव
 और भूमि का गर्भ भी मैंने ही टटोला है।

(क) कविता में 'मैंने' किसके लिए प्रयुक्त हुआ है?

- (i) प्रकृति
- (ii) भगवान
- (iii) मानव

(ख) इस कविता के कवि कौन हैं?

- (i) महेश कुमार बैरवा
- (ii) रामधारी सिंह 'दिनकर'
- (iii) निराला

(ग) 'गर्भ' शब्द का अर्थ क्या है?

- (i) धरती के भीतर
- (ii) घमंड
- (iii) मदद

(घ) मानव ने धरती को किससे जोड़ा है?

- (i) बादलों से
- (ii) चंद्रमा से

(iii) सागर से
(ड) 'धरती' का विलोम शब्द बताइये।

- (i) समुद्र
(ii) चंद्रमा

(iii) गगन

भाग - ग

प्रश्न 7: निम्नलिखित में से किसी एक विषय पर अनुच्छेद लिखिए। (5)

- (i) हमारे जीवन में खेलों का महत्व
(ii) विज्ञान वरदान या अभिशाप
(iii) मेरा प्रिय नेता

प्रश्न 8: फ़्रीस माफ़ी के लिए प्रधानाचार्या को प्रार्थना पत्र लिखिए। (5)

अथवा

बिजली संकट से मुक्ति दिलाने हेतु विद्युत प्रभारी को पत्र लिखिए।

St. PBN PUBLIC SCHOOL
UNIT TEST-I
CLASS – VII
MATHEMATICS
SAMPLE PAPER

Time: 2 Hours

M.M: 60

General Instructions:

- All questions are compulsory.
- Question paper consists of five parts.
- Part-I contains 10 Multiple Choice Questions, each carrying 1 mark.
- Part-II contains 9 questions each carrying 2 marks.
- Part-III contains 4 questions each carrying 3 marks.
- Part-IV contains 3 questions each carrying 4 marks.
- Part-V contains 2 case study questions each carrying 4 marks.

Part-I

Q.1 Choose the correct option and write in your answer sheet

(1X 10=10)

- i. The value of $|-16| + |9|$
(a) 7 (c) 25
(b) -7 (d) -25
- ii. The reciprocal of 4 will be
(a) $\frac{1}{4}$ (c) 4
(b) $\frac{-1}{4}$ (d) -4
- iii. The lines that do not intersect or meet each other at any point are known as
(a) intersecting lines (c) transversal
(b) parallel lines (d) none of these
- iv. Two squares are said to be congruent if they have
(a) same sides (c) same perimeter
(b) same area (d) all of these
- v. $(-42) \div \underline{\hspace{2cm}} = -1$
(a) -1 (c) 1
(b) -42 (d) 42
- vi. $4.04 \times 5 = \underline{\hspace{2cm}}$
(a) 220 (c) 2020
(b) 2.20 (d) 20.20
- vii. The angle 183° is classified as
(a) reflex angle (c) obtuse angle
(b) acute angle (d) straight angle

viii. Convert $2\frac{2}{5}$ into decimals.

(a) 0.2

(c) 0.5

(b) 2.4

(d) 0.24

In each of the following questions, an Assertion (A) and a corresponding Reason (R) supporting it are given. Study both the statements and state which of the following option is correct.

ix. **Assertion (A):** The multiplicative inverse of $\frac{2}{3}$ is $\frac{3}{2}$.

Reason (R): The reciprocal of an improper fraction is a proper fraction.

a) Both A and R are true and R is the correct explanation of A.

b) Both A and R are true, but R is not the correct explanation of A.

c) A is true, but R is false.

d) A is false, but R is true.

x. **Assertion (A):** All squares are congruent.

Reason (R): Two plane figures are congruent if they have the same shape and size.

a) Both A and R are true and R is the correct explanation of A.

b) Both A and R are true, but R is not the correct explanation of A.

c) A is true, but R is false.

d) A is false, but R is true.

Part II

Solve the following questions:

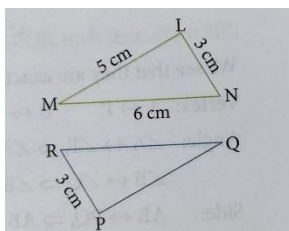
(2 X 9 = 18)

2. Write four consecutive integers less than -4.

3. Solve: $\frac{2}{3}$ of $\frac{9}{14}$.

4. Two supplementary angles are in the ratio of 7: 8. Find both the angles.

5. If $\triangle LMN \cong \triangle PQR$ by the SSS congruence rule. Find the lengths of sides PQ and QR.

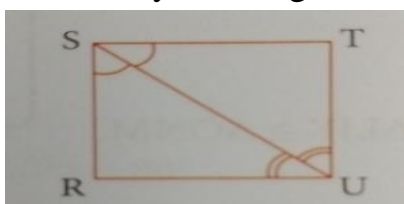


6. Arrange in descending order:

$\frac{2}{45}$, $\frac{7}{15}$, $\frac{3}{5}$, $\frac{6}{9}$, $\frac{1}{3}$

7. 45% of an angle is the complement of 63° . Find the angle.

8. Identify the congruence condition and write the congruence rule in symbolic form.



9. Find the complement of the following:

(a) 85°

(b) 13°

10. Two sides of a right-angled triangle are 6 cm and 8 cm. Find the length of its hypotenuse.

Part –III

Solve the following questions:

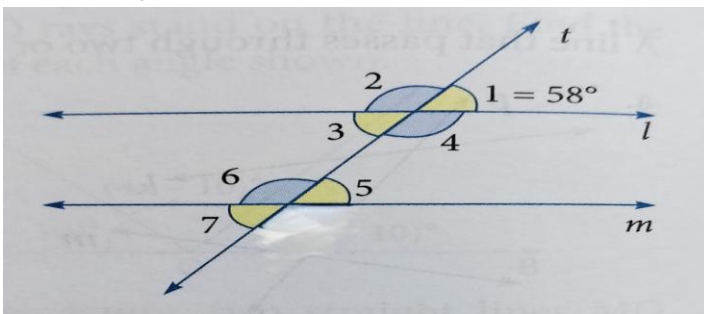
(3 X 4 = 12)

11. In a class test, containing 40 questions, marks are given for every correct answer and -2 are given for every incorrect answer. Neeraj attempted all questions out of which only 32 were correct. Find the score of Neeraj.

12.(a) The cost of 1 m cloth is ₹58.90. What is the cost of 12.56 m cloth?

(b) A boy bought 6 dozens of bananas for ₹302.40. Find the cost of each banana.

13. In the given figure, $l \parallel m$ and t is a transversal. If $\angle 1 = 58^\circ$, then find all the other angles.



14. If $\triangle ABC \cong \triangle XYZ$, write all the corresponding congruent parts of the triangles.

Part –IV

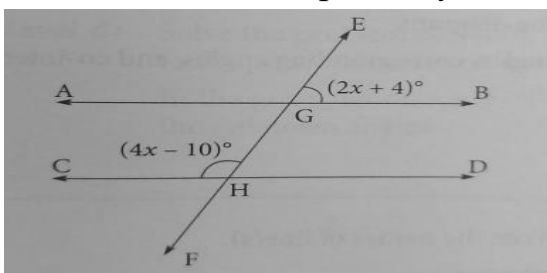
Solve the following questions:

(4 X 3 = 12)

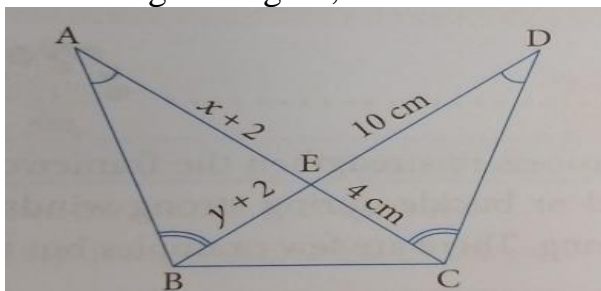
15.(a) The quotient of division of two integers is 29 and the remainder is 2. If the divisor is 6, find the dividend.

(b) Simplify: $11 + 2 \times 3 - 4 \div 2 \{2 \times (3-5) + 14\}$.

16. In the given figure, $AB \parallel CD$ and EF is a transversal that intersects both AB and CD at G and H respectively. Find $\angle AGE$ and $\angle GHD$.



17. In the given figure, $\triangle ABE \cong \triangle DCE$, find the values of x and y .

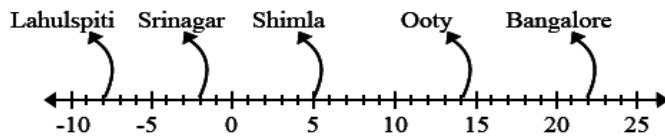


Part –V

Case study questions.

(4 X 2 = 8)

18. Following number line shows the temperature in degree celsius ($^{\circ}\text{C}$) at different places on a particular day.



- (a) Observe this number line and write the temperature of the places marked on it.
- (b) What is the temperature difference between the hottest and the coldest places among the above?
- (c) What is the temperature difference between Lahulspiti and Srinagar?
- (d) Can we say temperature of Srinagar and Shimla taken together is less than the temperature at Shimla?

19. Under a government health initiative, free vaccination drives are conducted in rural areas. The scheme covers $\frac{3}{5}$ of the total population in a village. Let's consider a village with a population of 1500 people.

- (a) How many people in the village are covered under the free vaccination drive?
- (b) Find the fraction of the population that is not covered by the scheme.
- (c) If each vaccine dose costs Rs. 50, find the total cost spent for the vaccination of 1500 people.
- (d) Convert the coverage fraction into decimal.

St. PBN PUBLIC SCHOOL
UNIT TEST-I
CLASS VII
SCIENCE

SAMPLE PAPER

Time: 2 Hours

MM: 60

GENERAL INSTRUCTIONS:

1. Question paper consists of 6 Sections.
2. SECTION A – contains 10 multiple choice questions and 2 Assertion Reason questions carrying 1 mark each.
3. SECTION B – contains 5 short answer questions carrying 2 marks each.
4. SECTION C – contains 5 short answer questions carrying 3 marks each.
5. SECTION D- contains 3 value based question carrying 2.5 marks each.
6. SECTION E- contains 3 HOTS based question carrying 2.5 marks each.
7. SECTION F- contains 2 case study based questions carrying 4 marks each.
- 8.. All questions are compulsory

SECTION A

Q1 Choose the correct option and write in your answer sheet:

(1x12=12)

1) 1. What is the process called when animals take in food and break it down into simpler substances?

a) Respiration

b) Photosynthesis

c) Digestion

d) Excretion

2) Convert 72 km/h to meters per second:

(a) 72 m/s

(b) 20 m/s

(c) 36 m/s

(d) 12 m/s



3) Symbol of Aluminium is

i) An

ii) Al

iii) Um

iv) Ni

4) Which of these countries produces wool?

i) Greenland

iii) Poland

ii) South Africa

iv) Jamaica.

5) Plants prepare their food by using energy from:

a) Sun

b) Soil

c) Water

d) Air

6) In the absence of which of the following, will photosynthesis not occur in leaves?

(i) Guard cells

(iii) Vacuole

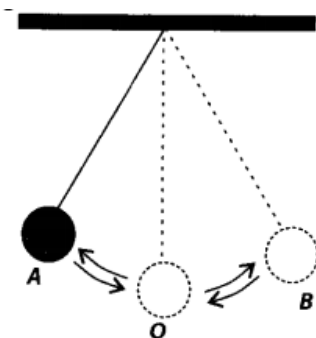
(ii) Chlorophyll

(iv) Space between cells

7) Which of the following is an example of a herbivore?

- a) Lion b) Elephant c) Snake d) Tiger

8) Observe the given figure



The time period of a simple pendulum is the time taken by it to travel from

- (i) A to B and back to A. (iii) B to A, A to B and B to O.
(ii) O to A, A to B and B to A. (iv) A to B.

9) Which of the following is a variety of silk?

- (i) Tussar silk (ii) Mulberry silk
(iii) Muga silk (iv) All of the these

10) What is released as a by product of photosynthesis?

- a) Carbon dioxide b) Oxygen c) Water vapor d) Glucose

Below questions are based on Assertion-Reasoning . Choose the correct option.

- i) Both assertion (A) and reason (R) are true and reason (R) is the correct explanation of assertion (A).
ii) Both assertion (A) and reason (R) are true but reason (R) is not the correct explanation of assertion (A).
iii) Assertion (A) is true but reason (R) is false.
iv) Assertion (A) is false but reason (R) is true.

11) **Assertion:** Jute is a biodegradable fiber.

Reason: Jute is obtained from plants.

12) **Assertion-** Our mouth has the salivary glands which secrete saliva.

Reason- The saliva does not break down the starch into sugar.

SECTION B

Q2. Answer the following questions in brief

(2x5=10)

- a) Distinguish between an element and a compound, giving one example of each.
b) What is the difference between Atom and Molecule ?
c) Explain the health hazards faced by workers of wool industry.
d) Define speed and give an example of an object moving with a constant speed.

- e) Write the function of
i) Guard cell ii) Stomata

SECTION C

Q3. Answer the following questions in detail

(3X5=15)

- a) Describe the motion of an object moving in a circular path. What is the force responsible for this motion?
- b) Write the chemical formula of following :
- i) Carbon Dioxide ii) Sodium Chloride iii) Zinc Hydroxide
- c) What is the difference between natural fibers and synthetic fibers? Give two examples of each.
- d) Explain the difference between a physical change and a chemical change. Give two examples of each.
- e) Write the chemical symbol of
- i) Hydrogen ii) Carbon iii) Boron

SECTION D

Q4. Value based question.

(2.5x3=7.5)

- a) Sania got upset on learning that for obtaining 1 kg of raw silk around 5,000 cocoons are killed. But her mother explained her that silkworms are also conserved in this process for obtaining silk next time. Also it is the source of income to many rural and needy persons.
- i) Why is silk famous?
- ii) If you get an option to select between a silk dress and a dress made of synthetic fibre which one will you select and why?
- iii) What value of Sania is shown here? (0.5+1+1)
- b) In a birthday party, Ram filled his plate with oily and sugary food. His elder sister Sarita on seeing this interrupted him. She told him that it is not good to eat too much of this kind of food. She asked him to share that plate with his friends and suggested to include some vegetables and salads also.
- i) Why is eating oily and sugary food not good for health?
- ii) What is the effect of sugary food on our teeth? How can we prevent it?
- iii) What value of Sarita is shown here? (0.5+1+1)
- c) A farmer is using chemical fertilizers to increase crop yield, but this is harming the soil and groundwater. What values should guide the farmer's decision-making, and what are the potential consequences of continued chemical fertilizer use?
- i) Why is the farmer using chemical fertilizers?
- ii) What is the negative impact of the farmer's use of chemical fertilizers?
- iii) What values should guide the farmer's decision-making regarding fertilizer use? (0.5+1+1)

SECTION E

Q5 High Order Thinking Skills (HOTS)

(2.5X3=7.5)

- a) How do plants obtain their nutrients?
- b) i) Write a balanced chemical equation for $\text{Mg} + \text{O}_2 \rightarrow \text{MgO}$
ii) What is valency?
- c) Plot a distance-time graph of two cars (A and B) which are moving with the same speed of 20m/s but are separated by a distance of 10 m. How will the graph look like?

SECTION F

Q6. Case study based questions

Read the passage and answer the following questions.

(4x2=8)

A group of Class 7 students went on a nature walk with their science teacher. During the walk, they observed a green patch on the bark of trees and some yellowish pipe-like structures climbing on other plants. The teacher explained that the green patches were algae, which are autotrophic organisms, while the yellow pipe-like structures were *Cuscuta*, a parasitic plant. One curious student asked if all plants can make their own food. The teacher said no, and explained that though most plants are autotrophs, some depend on other organisms for food. She also explained the process of photosynthesis, its importance, and the role of chlorophyll and sunlight in the process.

- 1. What is the mode of nutrition in green plants?**
- 2. Name the pigment essential for photosynthesis.**
- 3. What type of nutrition is observed in *Cuscuta*? Explain briefly.**
- 4. Why can't *Cuscuta* prepare its own food?**

b) Read the passage and answer the following questions.

Ria was eating a roti with dal when her elder brother asked, "Do you know how the food you're eating gets digested in your body?" Curious, Ria said no. Her brother explained that digestion starts in the mouth, where teeth break down food into smaller pieces and saliva mixes with it. Then, the food passes through the food pipe into the stomach, where it is mixed with digestive juices. From the stomach, it goes to the small intestine, where digestion is completed and nutrients are absorbed. The undigested part moves into the large intestine, and finally, the waste is removed from the body. Ria was amazed and wanted to learn more about how different animals eat and digest their food.

- 1. Name the organ where complete digestion of food takes place.**
- 2. What is the function of the large intestine in humans?**
- 3. Why do cows chew cud? Name this process.**
- 4. How is nutrition in amoeba different from that in humans? (Give one point)**

St. PBN PUBLIC SCHOOL
UNIT TEST- I
CLASS - VII
SOCIAL SCIENCE
SAMPLE PAPER

Time: 2 Hours

MM.60

GENERAL INSTRUCTIONS:

- 1. All questions are compulsory.**
- 2. Do as directed.**

Q1. Fill in the blanks with suitable words.

(1x3=3)

- i) In Arabic and Persian literature of the medieval period, the Indian subcontinent is referred to as _____.
- ii) The innermost layer of the Earth is known as _____.
- iii) _____ is the form of government in which supreme authority is vested with a single hereditary ruler.

Q2. Choose the correct option-

(1x5=5)

- i) Which one of them is a literary source to study medieval history
 - a) coins
 - b) manuscripts
 - c) artefacts
 - d) monuments and buildings
- ii) **Assertion(A)** : Environmental degradation is the process by which the environment is increasingly polluted, exploited and destroyed.

Reason (R) : Human beings are modifying the environment to satisfy their ever-increasing wants.

- a) A is true but R is false.
 - b) A is false but R is true
 - c) Both A and R are true and R is the correct explanation of A.
 - d) Both A and R are true but R is not the correct explanation of A.
- iii) A group of people who voluntarily decide to enter politics aspiring to run the government if elected to power is called a
 - a) Campaign
 - b) Election Commission
 - c) Political party
 - d) Parliament
- iv) Warriors and chiefs who served under the rulers were called
 - a) Urs
 - b) Samantas
 - c) Paramaras
 - d) Chalukyas

v) **Assertion (A)** : The inner core of the Earth is solid.

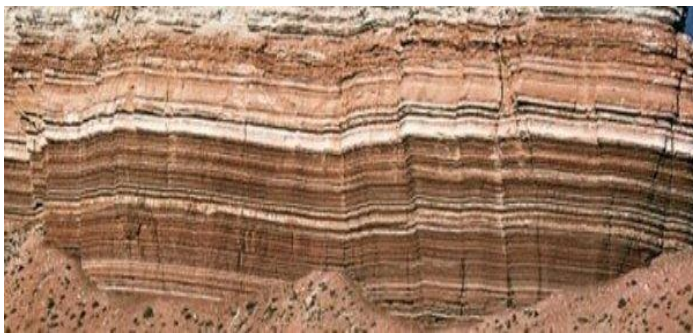
Reason(R) : The core is frozen.

- a) A is true but R is false.
- b) A is false but R is true.
- c) Both A and R are true and R is the correct explanation of A.
- d) Both A and R are true but R is not the correct explanation of A.

Q3. State whether the following statements are True or False: (1x4=4)

- a. Epigraphy is the study of inscriptions.
- b. India has a single-party system.
- c. Legislature is concerned with the making of laws.
- d. Aquariums, terrariums and agricultural land are artificial ecosystems.

Q4. Look at the picture given below and answer the following questions. (1x5=5)



- a) Identify the rock given in the picture. (1)
- b) How is the rock shown above formed? (2)
- c) Name any two places where this type of rock is formed. (2)

Q5. Answer the following questions in one word / few words. (1x5=5)

- a) Which event marked the end of the medieval period of Indian history?
- b) Name any one centre of learning that flourished under the Palas.
- c) What is hydrosphere?
- d) Name any one form of Totalitarian government.
- e) Which body conducts elections in India?

Q6. Answer the following questions in brief. (2x4=8)

- a) What was a mandalam under Chola rule?

- b) Explain any two importance of hydrosphere.
- c) What is a constitution?
- d) What is a constituency?

Q7. Answer the following questions.

(3x4=12)

- a) Explain Natural and Human-made environments with examples.(any three points)
- b) Explain how inscriptions and coins serve as sources of history of medieval India.
- c) What do you understand by Totalitarian government? Name two types of Totalitarian government.
- d) Explain the working of the first-past-the-post system. Why it does not allow for a truly representative result?

Q8. Answer the following questions in detail

(5x3=15)

- a) Explain with examples how inscriptions and coins serve as a source of the history of medieval India.

(OR)

Who were the Rajputs? Describe the rule of any two Rajput dynasties in early medieval India.

(1+4)

- b) Why do you think fossil and fossil fuels are not found in igneous or metamorphic rocks?

(OR)

What is an atmosphere? How it is useful to humans?

(2+3)

- c) What is a Coalition government? What are pros and Cons of having a Coalition government? (any three)

(2+3)

(OR)

What are the key elements of a democracy? Why do we say that people are the highest political authority in a democracy?

Q9. Locate and label the following on the given outline map of India.

- (i) Kannauj
- (ii) Ajmer
- (iii) Dhar

St. PBN Public School, Gurugram
Unit Test- I
Class - VII
Subject – Computer
Sample Paper

TIME: 2 Hours

MM: 40

NAME: _____

ROLL NO: _____

General Instructions:

1. All questions are compulsory.
2. Read each question carefully.

Q.1 Tick the correct option (1x5=5)

1. To select entire worksheet, press the _____ key combination.
a) Ctrl+A b) Ctrl+C c) Alt+A
2. Which function returns the addition of numeric values in a range?
a) COUNT() b) SUM() c) MAX()
3. Which function finds the largest smallest number in a range?
a) AVERAGE() b) Apostrophe c) Exclamation
4. Which key combination is used to get the sum of the values of adjacent cells?
a) Shift+s b) Ctrl+' c) Alt+=
5. To use the sheet reference, which address is appropriate out of the following options?
a) D4!sheet1 b) Sheet,D4 c) Sheet1!D4

Q.2 Fill in the blanks: (1x5=5)

1. The cell address in a formula is also called _____
2. To minimize the worksheet, press _____ key combination.
3. Formulas are used to perform _____
4. To enter date and time together separate them with a _____
5. _____ and _____ buttons appear on the formula bar.

Q.3 State True or False: (1x5=5)

1. Copying refers to moving data from one place to another.
2. To insert a new column in excel sheet, select Add button on the insert tab.

3. The error #VALUE occurs if the number is divided by zero.
4. You cannot rename the sheet name.
5. Formulas cannot be edited in formula bar.

Q.4 Assertion and Reason-

In the following questions a statement of assertion is followed by a statement of reason select the correct answer (1x2=2)

1. Assertion: To make the entry of digits as text , begin the entry with an apostrophe(')

Reason: apostrophe indicates the string or text value.

- a) Both Assertion (A) and Reason (R) are true and Reason (R) is a correct explanation of Assertion (A).
- b) Both Assertion (A) and Reason (R) are true but Reason (R) is not a correct explanation of Assertion (A)
- c) Assertion (A) is true and Reason (R) is false.
- d) Assertion (A) is false and Reason (R) is true.

2. Assertion (A): BEDMAS rule is used to evaluate mathematical expression.

Reason (R): Excel performs various calculations and solve complex expressions.

- a) Both Assertion (A) and Reason (R) are true and Reason (R) is a correct explanation of Assertion (A).
- b) Both Assertion (A) and Reason (R) are true but Reason (R) is not a correct explanation of Assertion (A)
- c) Assertion (A) is true and Reason (R) is false.
- d) Assertion (A) is false and Reason (R) is true.

Q.5 Answer the following in one word or one sentence.

(1x5=5)

1. Which button is used to Redo the action?
2. What is the extension of excel file?
3. What will be the cell address of 16th row 7th column?
4. Write an example of formula.
5. In which group paste option is available in excel program?

Q.6 Answer the following in short-

(2x3=6)

1. Explain any two functions with example.
2. What are formulas?
3. Write any two features of excel.

Q.7 Answer the following questions:[Attempt any 3]**(3x3=9)**

1. Explain the method to insert multiple columns in a worksheet.
2. How will you select a range and non-adjacent cells in a worksheet?
3. What is the function of undo and redo commands?
4. Explain cell address with the help of example.

Q.8 Case study base questions.**(3)**

An Excel worksheet is a grid-like workspace within a Microsoft Excel workbook where users can enter, manipulate, and analyze data. It consists of rows numbered from 1 to 1,048,576 (Excel 2019), and columns labeled from A to XFD. Each cell within the grid can contain various types of data, such as text, numbers, dates, formulas, or functions. Worksheets are versatile tools used for organizing information, performing calculations, creating charts, and generating reports. They are commonly utilized in diverse fields, including finance, education, science, and business, for tasks ranging from simple data entry to complex data analysis.

Answer the following questions-

- | | |
|--|---|
| 1. What are the worksheets? | 1 |
| 2. How many types of data can be entered in excel sheet? | 1 |
| 3. What are the uses of worksheets? | 1 |

सेंट पी बी एन पब्लिक स्कूल
इकाई परीक्षा -I
कक्षा सातवीं
संस्कृत

अवधि 2 घंटे

अ० अंक 60

सामान्य निर्देश :-

1. सभी प्रश्नों के उत्तर देना अनिवार्य है।
2. प्रश्नों को ध्यान से पढ़कर उत्तर दीजिए।

प्रश्न 1 निर्देशानुसार सही विकल्प चुनकर उत्तर दीजिए।

(1x10=10)

- | | |
|---|------------------------|
| 1) अलिखत् द्विवचनं भविष्यति - | |
| i. अलिखः | ii. अलिखताम् |
| 2) अपततम् एकवचनं भविष्यति | |
| i. अपतत्: | ii. अपतन |
| 3) अवदः इति शब्दे पुरुषः लिखत । | |
| i. उत्तम पुरुष | ii. मध्यम पुरुष |
| 4) गच्छामि ,लोट लकार में होगा- | |
| i. गच्छाम | ii. गच्छानि |
| 5) वाक्यानि पूरयत- यूयं पत्राणि --- | |
| i. लेखिष्यथ | ii. लिखन्ति |
| 6) ज्ञानार्थकम् का अर्थ अस्ति ? | |
| i. ज्ञान देना | ii. ज्ञान प्राप्त करना |
| 7) वल्लकन्दुकम् अर्थ अस्ति | |
| i. बालकलाकार | ii. क्रिकेट |
| 8) ते छात्राः पठन्ति ,लृट लकारे परिवर्तयत | |
| i. पठिष्यन्ति | ii. अपठतः |
| 9) तौ अत्र न अपठत ,शुद्धं अर्थ अस्ति | |
| i. अपठताम् | ii. पठामः |
| 10) त्वं किम् अपठः ? | |
| i. कविते | |
| ii. पुस्तकं | |

- प्रश्न 2 निम्नलिखित शब्दों का पद परिचय दीजिए। (6)
अचलत्, वदिष्यति नमन्ति
- प्रश्न 3 निम्नलिखित वाक्यों का संस्कृत अनुवाद कीजिए। (5)
i. तुम सबने चित्र बनाए।
ii. मैंने लालकिला देखा।
iii. मैंने पाठ याद किया।
iv. तुम दोनों ने पाठ याद किया।
v. हम दोनों उद्यान में खेले।
- प्रश्न 4 निम्नलिखित वाक्यों को शुद्ध कीजिए। (4)
i. तौ अत्र न अपठत्।
ii. त्वं कुत्र अगच्छतम्?
iii. अहम् वृद्धं नरं अनमत्
iv. सः लेखं अलिखताम्
- प्रश्न 5 हिन्दी अनुवादं कुरुत। (5)
i. आवां मातरं पत्रं अलिखाव
ii. यूयं अत्र किं अलिखत
iii. उद्याने वृक्षाः आसन्
iv. वयं भ्रमणाय अगच्छाम
v. अहं निर्धनाय वस्त्रं अयच्छं
- प्रश्न 6 निर्देशानुसारेण वचन परिवर्तनं कुरुत। (3)
i. त्वं भोजनम् अपचः। (द्विवचने)
ii. युवां पाठम् अस्मरतम्। (बहुवचने)
iii. वयं पुस्तकं अपठाम (एकवचने)
- प्रश्न 7 गम् धातु रूप लोट लकार एवं भू धातु रूप लट् लकार में लिखिए। (9)
- प्रश्न 8 भू धातु विधिलिङ् लकार प्रथम एवं उत्तम पुरुष में लिखिए। (3)
- प्रश्न 9 गम् धातु लङ् लकार मध्यम एवं उत्तम पुरुष में लिखिए। (3)
- प्रश्न 10 कवि शब्द रूप प्रथमा, द्वितीया, तृतीया एवं चतुर्थी विभक्ति में लिखिए। (6)
- प्रश्न 11 राम शब्द रूप पञ्चमी, षष्ठी, सप्तमी एवं संबोधन विभक्ति में लिखिए। (6)

